

Kilmer Community Meeting

7.29.20

5:00 - 5:45 pm





Community Meeting Agenda

- I. Review Goals and Norms
- II. Principal Updates
- III. BPS Reopening Draft Plan
- IV. Q & A

Zoom Meeting Norms

- If you feel comfortable doing so.. Please turn your “video” on.
- Please keep yourself “muted” to ensure that all participants can hear the presentation
- If you haven’t done so already, please type in your name so that I know who you are





Meeting Goals

- To update the Kilmer Community on my Entry Plan for transitioning into the Principalship at the Kilmer School K-8
- To review the BPS School Reopening Working Draft Plan
- To Provide an opportunity for our families to share any comments, questions, and/or concerns that you might have



Principal Updates

I. Staff Check Ins

- Meeting with individual teachers via Zoom
- Goal to “meet” all teachers before the last week of August
- Hosting a series of Staff Meetings
- Met with SEL Grant/Wallace Foundation Team
- Meeting with other partners



Principal Updates

II. Meeting with SPC, SSC, and Friends of the Kilmer

- Met with reps from each association
- I will be meeting each team before the start of school
- We need your continued support!



Principal Updates

III. Principal Meet and Greet Sessions

- Unable to host in person sessions
- I will be hosting grade band Zoom meetings starting next week. More information to follow
- Community Survey will be sent out next week.



Principal Updates

IV. Odds and Ends

- Hiring: Para, Visual Arts, PE (.2) and Student Support Para
- Class Lists: Class lists will be sent out by Friday, August 7th



Q & A

If you have any questions about my updates please type your question into the “Chat Box”.

I will send out a document answering any questions that I do not get to.



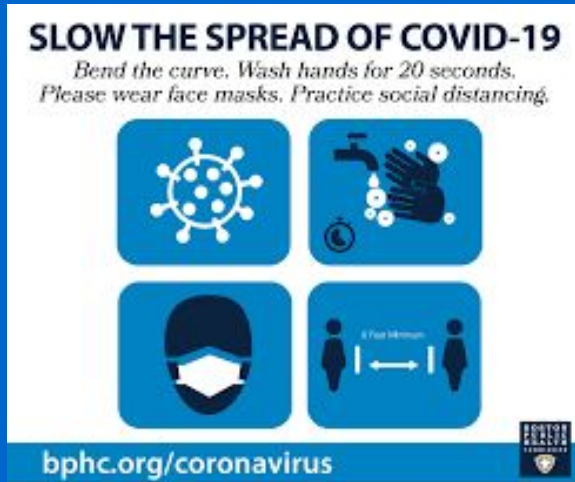
BPS Reopening Draft Plan





BPS Reopening Draft Plan

The following slides are from the BPS School
Reopening Draft Plan



Public Health Requirements:

- Social distancing (all 6 feet apart)
- Masks on all students and staff
- One student per row per bus
- No food in cafeterias
- Health protocols followed for bus & building sanitation and school nurse response to suspected exposure
- No group gatherings if community infection rates are outside of acceptable range

3 Required Plans:

- Fully Remote
- Hybrid
- All in Person

Dates:

- July 31st
- August 10th

Learning Models: A Continuum



Online Learning
learning remotely through an
online platform



Blended Learning
a combination of online and
on-site learning



On-site Learning
learning in-person in a school
building

Guardrails



1. **Opt-in:** Parents can choose to have students stay remote if desired.
2. **Opt-out:** Parents can choose to opt out of bus transportation.
3. **Start Remote for All if Health Numbers Spike/Don't Stay Down:** Guidelines from BPHC must be met before we move to anything other than remote.
4. **And/or (no final decision yet made) Start with Blended/Hybrid Model if Health Numbers Allow.**

DRAFT Under Consideration...

Hopscotch Model

Teacher			
Group A Student	Group B Student	Group A Student	Group B Student
Group B Student	Group A Student	Group B Student	Group A Student
Group A Student	Group B Student	Group A Student	Group B Student
Group B Student	Group A Student	Group B Student	Group A Student

Description:

- 2 Days + 3 Days
- Group A in-person + Group B online - then switch
- Teachers teach remotely and in-person simultaneously.
- 6 feet of social distancing maintained
- Exceptions:
 - Special education rooms if all students can fit within social distancing requirements?
 - Maybe weeks (v days) in high schools?
- Supports as Needed:
 - Training on teaching both online and in-person
 - Tech tools (cameras; speakers; online programs)
 - Substitute pool
 - Paraprofessional assistance/training
 - Collaborative planning time



School Based Plans will Include:

- **Transportation:** Busses cleaned daily, one student per “seat”, assigned seats, everyone wear masks, and loading and unloading protocols to enforce social distancing
- **Facilities:** Every building cleaned and sanitized overnight, Entries/Exits/Hallways marked for traffic lanes, Classrooms rearranged for social distancing, Common areas repurposed if/as necessary, and Restroom signage about social distancing; partitions installed as necessary
- **Food Service:** Food prep areas rearranged for social distancing, Grab & Go breakfast planned, Lunch prepared/heated on site, Lunch delivered to classes or picked up by students then back to classrooms



School Based Plans will Include:

- **Student Health Supports:** Protocols in place for medical evaluation, potential isolation, follow-up to reports of symptoms/exposure, Testing not required to start, but required for any reported exposure, Enforcement of quarantine required following positive test results, and Isolation rooms identified in every school



Other Updates

- BPS and BTU are working on finalizing working conditions for teachers
- DESE: 170 day school year, we have 10 days at the beginning of the school year that we can use for planning, instruction but must start before 9/16 (BPS hasn't made a decision on how to use these days!)
- School will receive additional Chromebooks for those students that did not receive a "new device"



Next Steps

- Continue to share all communications from BPS/DESE to our Community
- Hosting several Staff Meetings and Community Meetings as new information is provided
- All schools will receive a BPS Opening Guidance Doc as well as an School Plan on Google Docs, each school submits their own plan



Next Steps

School Based Plans:

- Creating a Kilmer Reopening Team
- Team's progress will be shared and families will have an opportunity to provide their insight and feedback
- BPS Deadlines have not been established



Stay Informed!

DESE

<http://www.doe.mass.edu/covid19/return-to-school/>

Initial Fall School Reopening Guidance

Guidance for Courses Requiring Additional Safety Considerations for Fall 2020

Transportation

Facilities

BPS

[Fall Reopening Family Update](#)

BPS: [community meetings](#)

BPS: Reopening Website: [reopening page](#)

Boston Public Health Commission:
<https://bphc.org/Pages/default.aspx>



Q & A

1. Please type your question into the “Chat Box”
2. I will do my best to answer each question during this session
3. I will also save the Chat, organize questions based on themes, and send out a separate document with my answers.



Thank you!

If you have any other questions, concerns, and/or comments please contact me directly.

Email: jfoley3@bostonpublicschools.org (preferred)

Cell: 617-821-1881